

BACK BASICS 2

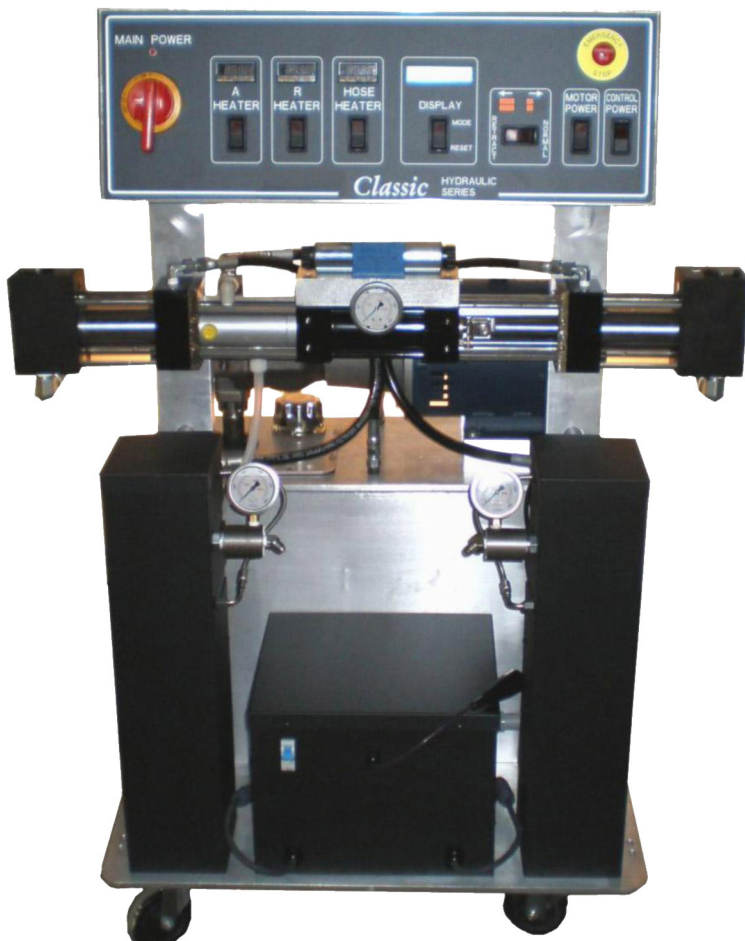

MADE IN THE USA

“Classic” Series

Hydraulic Proportioner For Foam and Coatings

PMC Proportioners represent the best and most effective partner for high quality plural component applications!

The “Back2Basics” compact, original and exclusive design of the new generation of equipment from Polyurethane Machinery Corporation is the direct result of customer input, innovation, creativity and the perfectionist spirit of our engineers.



**POLYURETHANE
MACHINERY
CORPORATION**

Polyurethane Machinery Corporation

Headquarters:

One Gusmer Drive, Lakewood, NJ 08701 USA

Manufacturing:

Two Gusmer Drive, Lakewood, NJ 08701 USA

Office: 732-415-4400

Fax: 732-364-4025

www.polymac-usa.com

sales@polymacusa.com

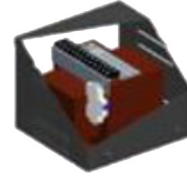
Features designed into the PMC GH-Series proportioners to provide the contractor with applicator friendly and serviceability to meet today's market place demands.



Relay Logic Control



Passive Hydraulic System



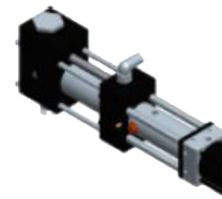
Hose Heat Tap Setting



Innovative TSU Design



NEW Heated Hose Assembly Design



NEW Pump Base Design

Technical Specifications:

MODEL	GH-25 2000	GH-25 3000	GH-40 2000	GH-40 3000
Output	25lbs/min	1.3 gallons/min	40lbs/min	2.5 gallons/min
Max. Working Pressure	2000PSI	3000PSI	2000PSI	3500PSI
Max. Hose Length	310 ft	310 ft	410 ft	410 ft
Heater Capacity	10KW (12KW Optional)	10KW (12KW Optional)	15KW (18KW Optional)	15KW (18KW Optional)
Hose Heating Power	90 Volts	90 Volts	120 Volts	120 Volts
Weight	420lbs/590lbs	420lbs/590lbs	420lbs/590lbs	420lbs/590lbs
Electrical @ 10KW Heaters	35 amps @ 3 x 230V 70 amps @ 1 x 230V	35 amps @ 3 x 230V 70 amps @ 1 x 230V		
Electrical @ 12KW Heaters	43 amps @ 3 x 230V 80 amps @ 1 x 230V	43 amps @ 3 x 230V 80 amps @ 1 x 230V		
Electrical @ 15KW Heaters			80 amps @ 3 x 230V 130 amps @ 1 x 230V	80 amps @ 3 x 230V 130 amps @ 1 x 230V
Electrical @ 18KW Heaters			93 amps @ 3 x 230V	93 amps @ 3 x 230V



**POLYURETHANE
MACHINERY
CORPORATION**

**BACK
BASICS 2**